

# ROMEO, ROMEO, ROMEO

Dance production by Joshua Monten

## TECH RIDER (OUTDOOR VERSION)

### OVERVIEW

"Romeo, Romeo, Romeo" is a dance production for four dancers. Both indoor and outdoor versions of the piece exist. The outdoor version lasts approximately 30 minutes. It can be performed up to twice daily.

A video of the outdoor version is available at <https://vimeo.com/354161661>.

### CONTACTS

Choreographer      Joshua Monten      +41 76 323 58 30      joshuamonten@hotmail.com

### TEAM ON TOUR

4 dancers

### SPACE

Ideally there would be 10m x 9m dancing space, surrounded by **seating for the audience on all sides**.

No dance floor is necessary. (However, if one is available, it would be appreciated. 10m x 9m would be ideal.)

See attached stage design plan. This can, of course, be adjusted to fit local conditions.

### SOUND

#### The Presenter must provide:

- PA System according to the size of the space
- 1 microphone stand
- 1 XLR cable for the microphone (30-40m)

#### Provided by the Company:

- 1 microphone
- 1 laptop
- 1 compressor
- sound console

### SET-UP TIME AND TECHNICIANS

Set-up time per performance: around 15 minutes.

Build-down time: around 5 minutes.

We prefer to have a technician present during each performance – in order to check sound levels.



## **LIGHT**

No lighting is necessary for performances during the day.

For performances at night, we will adjust our lighting design to work in non-traditional spaces with limited technical resources.

## **DRESSING ROOM**

We require space for four dancers, equipped with mirrors, showers with hot water, and materials for ironing.

## **LAUNDRY SERVICES**

If show is presented on multiple days, the Presenter must provide laundry service to wash and dry the costumes between each performance day.

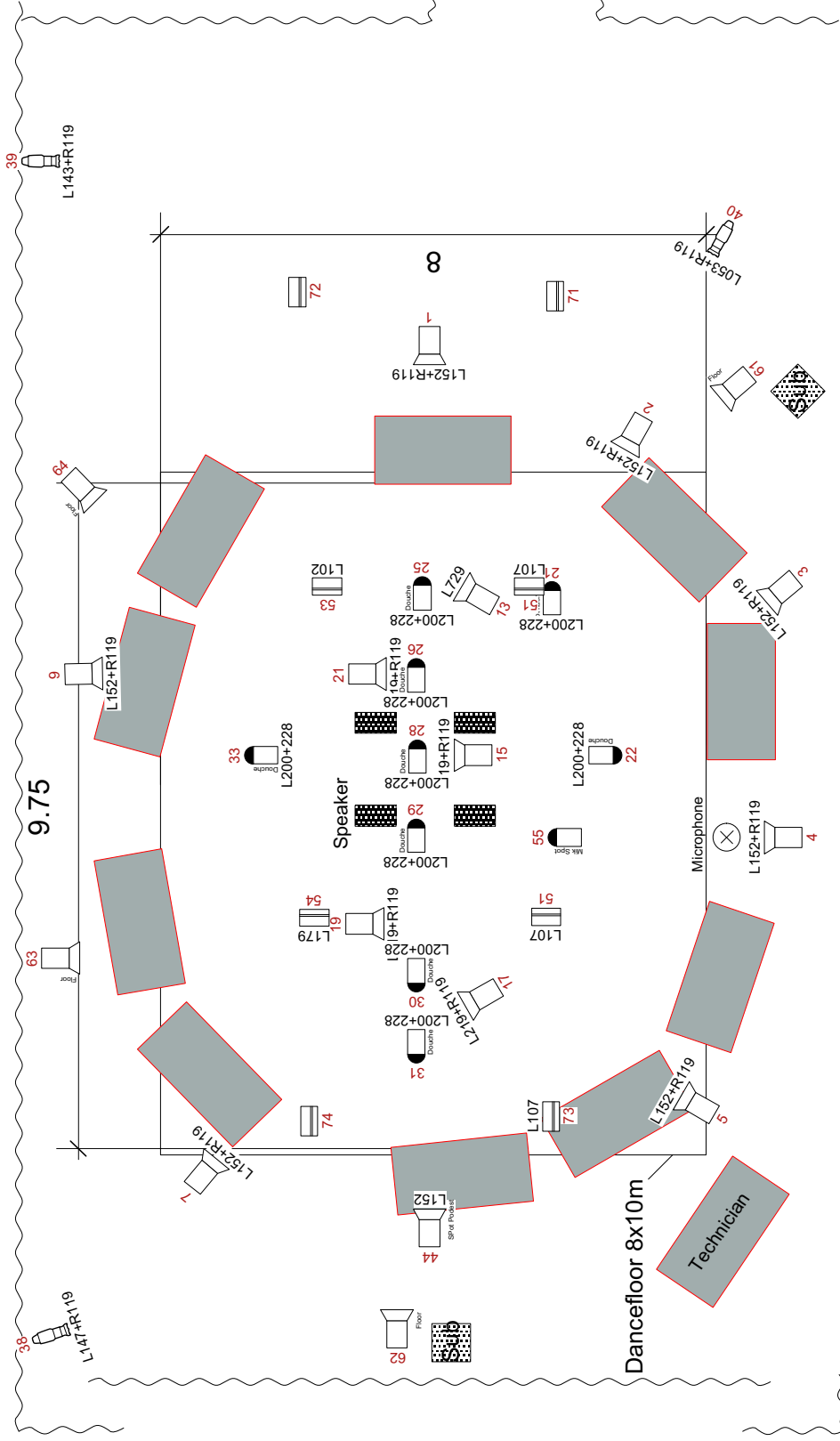
## **CATERING**

Mineral water, coffee, tea, milk, fresh fruit, chocolate, dried fruit and nuts.

**This show may be adapted to different venues.**

**Don't hesitate to get in touch with our staff if any questions arise.**

# General Stage-, Light and Soundplan – Romeo Romeo Romeo



## Stage:

- 10 Büttec raised platforms, 2m x 1m, 40cm H
- Actual positions may vary slightly
- Interior space for dancing: approx. 8m x 10m
- 1 Büttec raised platform, 2m x 1m, 100cm H for technician
- 20 extra chairs can be prepared behind the curtain

## Lamps needed:

- 17 PC 1000W
- 10 PAR 64cp62
- 8 Floodlights
- 3 ETC Source 4 Zoom 25-50

## Sound:

- 4 high-range speakers, hung overhead
- 2 low-range speakers, placed on 2 sides of the space
- 1 Microphone (to be finally placed at Get-In)