



Faking It

Dance production by Joshua Monten

TECH RIDER (indoor version)

OVERVIEW

"Faking It" is a 60-minute dance performance.

A full-length performance video is available at <https://vimeo.com/819408222>

CONTACTS

Choreographer	Joshua Monten	+41 76 323 58 30	joshuamonten@hotmail.com
Lighting Designer	Tonio Finkam	+41 79 514 66 91	tonio@finkam.ch
Technician on tour	TBA		

TEAM ON TOUR

1 choreographer
1 technician
4 dancers

SPACE

"Faking It" is a highly flexible dance production and can be adapted to a diverse range of venues. Both black-box theaters and proscenium stages are possible. The staging is carefully adapted to the specific layout of each theater (including both the stage and the auditorium), thus creating a "site-specific performance" in each new venue.

General requirements:

- stage (preferably 12m x 10m)
- stairs to the auditorium on the right and left of the stage
- wooden dark floor or black dance floor
- black curtains hung to cover stage right and one half of the back of the stage (see plot below)
- pre-hanging of lights and curtains if possible

PROPS

The Company brings little material with them. The majority of props and set are obtained by repurposing each venue's backstage technical material.

Material required:

- 1 x double-sided ladder on stage (photo1)
- Stack of stage platforms 2m x 1m (photo 2)
- 1 x table (must be stable) or 1m x 1m stage platform (photo 3)
- 1 x cable trolley (photo 4)
- 1 x truss tower FD34 / 1x 1m, 2x 0.5m, 3x 0.25m, plate (photo 5)
- NB: if truss tower not available, an alternative structure can be constructed from steel scaffolding pipes (photo 5-alt)
- 1 x truss fly FD34 / 4m (photo 6)
- 3 x brooms and 1 x mop (photo 7)
- 1 x cable CEE63, length 2m (photo 8)



1 / ladder



2 / platform stack



3 / table



4 / cable Trolley



5 / truss tower



5-alt / scaffolding



6 / truss fly



7 / brooms and mop



8 / cable CEE63

LIGHT

See general plan below.

General requirement:

- All lighting devices will be provided with adapted cables, safety and filter frames.
- The lighting desk will be installed in the audience for focusing and rehearsals.
- The lighting desk will be installed in the center of the back row of the audience for the show.
- No glass between stage and operator. Space is needed for 1 computer on the desk.

A more exact lighting plot will be prepared for each performance location after contact has been made with the venue's technical manager. Thank you for sending a DXF or DWG file.

Desk: ETC iOS family

Dimmers: 36 2Kw dimmers on dmx. Same brand, same curve

Lamps:

- 18** x PC 1kW, **same model and same clamp**
- 24** x PAR64 CP62
- 2** x 1Kw asymmetrical floodlight
- 9** x ETC 25-50 profiles or Juliat 613sx

Filters:

- Lee 201: **2** x floodlight
- Lee 201: **4** x PC 1kW
- Lee 126: **2** x PC 1kW
- Lee 106: **2** x PC 1kW
- Lee 142: **2** x PC 1kW
- Rosco 114: **6** x floodlight
- Rosco 119: **9** x ETC profile

Extras:

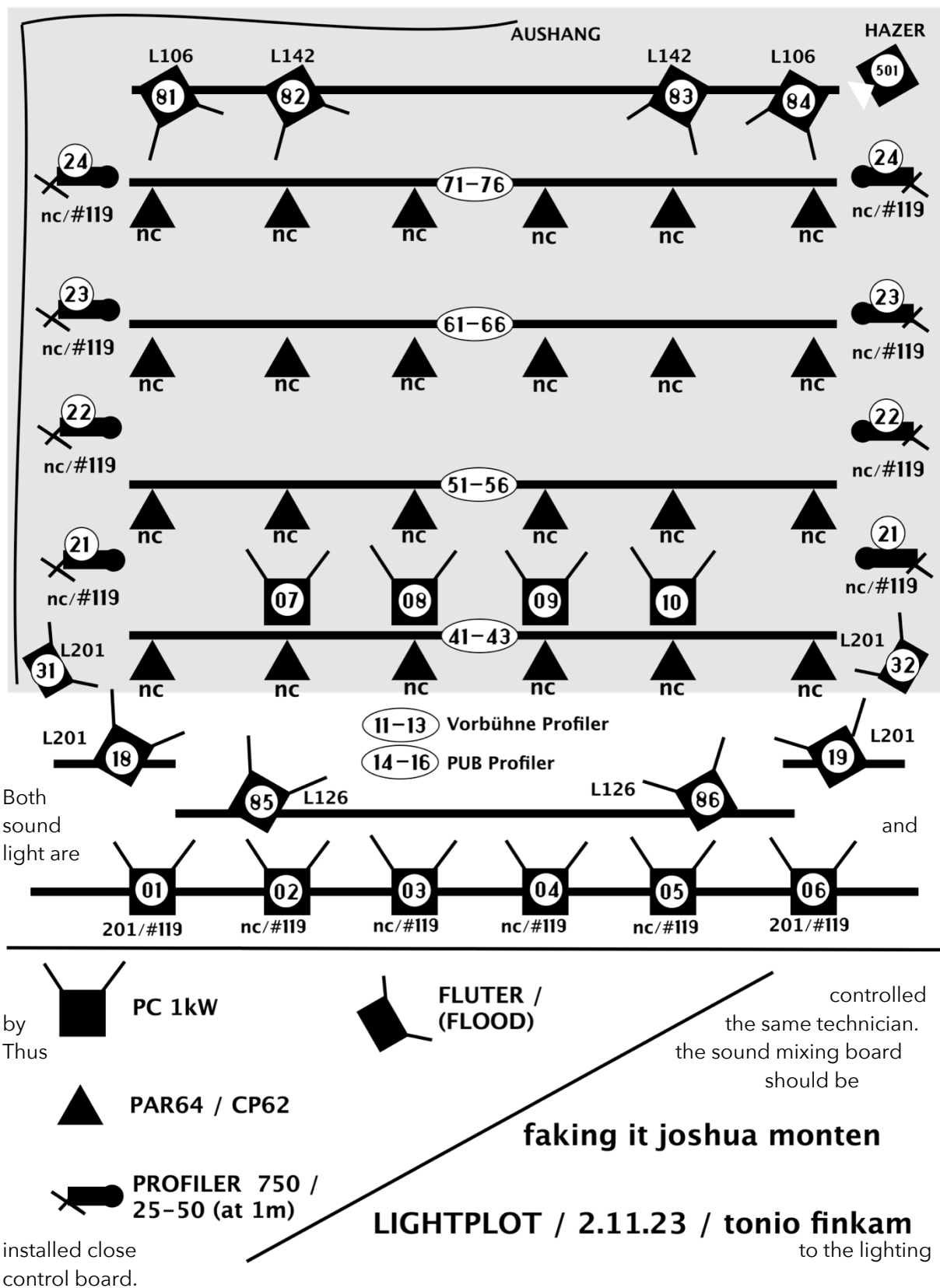
- 10** x floor stands
- 1** x HAZER

SOUND

Sound comes from the company's computer (mini-jack port).

General requirements:

- a full-range speaker system, positioned on the right and left sides of the stage
- additional hanging speakers (to improve sound quality for back rows)
- two monitors on stage, right and left
- for performances: a mini-jack connection for the mixing board
- for rehearsals: a mini-jack connection placed in the first row of seating.



DRESSING ROOM

We require space for four dancers, heated, equipped with mirrors, showers with hot water, fresh towels, and materials for ironing.

LAUNDRY SERVICES

If show is presented on multiple days, the Presenter must provide laundry service to wash and dry the costumes between each performance day.

CATERING

Mineral water, coffee, tea, milk, fresh fruit, chocolate, dried fruit and nuts – all available on setting-up day and performance day(s)

This show may be adapted to different venues.

Don't hesitate to get in touch with our staff if any questions arise.

