



# ANGER MANAGEMENT

Dance production by Joshua Monten

## TECH RIDER (indoor version)

### OVERVIEW

"Anger Management" is a 65-minute dance performance.

It can be performed up to twice daily.

A full-length performance video is available at <https://vimeo.com/1020912311>

### CONTACTS

Choreographer	Joshua Monten	+41 76 323 58 30	joshuamonten@hotmail.com
Lighting Designer	Mirjam Berger	+41 78 648 18 89	mirjam.berger@jostundberger.ch
Technician on tour	TBA		

### TEAM ON TOUR

1 choreographer  
1 technician  
4 dancers

## SPACE

"Anger Management" can be performed in a black-box theater or a proscenium stage. See general plans below.

### **General requirements:**

- Clean black dance floor (ideal: 12 m x 10 m; minimum 7 m x 7 m)
- Black curtains on three sides of the stage
  - Curtains should be stabilized with clamps and weights at the bottom (because pillows will be thrown at them)
  - Curtains may be omitted if the space has clean black walls
- Hazer
- Pre-hanging of lights and curtains (if possible)

A more exact set plan will be prepared for each performance location after contact has been made with the venue's technical manager. Thank you for sending a DXF or DWG file.

## PROPS

### **Provided by the venue:**

- 30-40 seating cushions and/or pillows, ideally in multiple sizes between 40 and 65 cm, any color
- 2-3 long cables (for instance XLR/DMX/Powercon or simply electric cables), ideally in colors other than black, which will be used as props

### **Provided by the company:**

- 40 pillowcases (treated with Flamex flame retardant) and 10 pillows
- Black cord (used to hang 8 pillows from the rig)

## LIGHT

See general plans below.

### **General requirement:**

- All lighting devices will be provided with adapted cables, safety and filter frames.
- The lighting desk will be installed in the center of the back row of the audience for the show.
- No glass between stage and operator. Space is needed for 2 computers on the desk.

A more exact light plot will be prepared for each performance location after contact has been made with the venue's technical manager. Thank you for sending a DXF or DWG file.

**Desk:** ETC ION or Element

**Dimmers:** 36 2Kw dimmers on DMX. Same brand, same curve

**Filters:** According to light plot.

**Lamps:** According to light plot. Will include:

- 10 floor spots

## SOUND

### Provided by the venue:

- A full-range speaker system, positioned on the right and left sides of the stage
- Monitors on stage
- Digital mixing board with the following features
  - 6 input channels
  - Parametric EQ on each channel
  - Build-in echo/delay effect on channel 1
  - 2 master outputs
  - 2 aux outputs for monitors
- Mini-jack cable for laptop
- Jack cable, D.I. box and XLR cable for ukulele
- SM58 microphone, plus microphone stand and cable

### Provided by the company:

- 2 small-diaphragm condenser microphones
- Ukulele
- Laptop with QLab and mini-jack port

### Channels

- |     |                      |  |
|-----|----------------------|--|
| – 1 | microphone (phantom) | hanging 2 m above the stage (center stage) |
| – 2 | microphone (phantom) | hanging 2 m above the stage (stage left)   |
| – 3 | microphone (SM58)    | on microphone stand (stage left)           |
| – 4 | ukule D.I.           | stage left                                 |
| – 5 | Laptop L             | at control desk                            |
| – 6 | Laptop R             | at control desk                            |

Both sound and light are controlled by the same technician. Thus the sound mixing board should be installed close to the lighting control board.

## DRESSING ROOM

We require space for four dancers, heated, equipped with mirrors, showers with hot water, fresh towels, and materials for ironing.

## LAUNDRY SERVICES

If show is presented on multiple days, the Presenter must provide laundry service to wash and dry the costumes between each performance day.

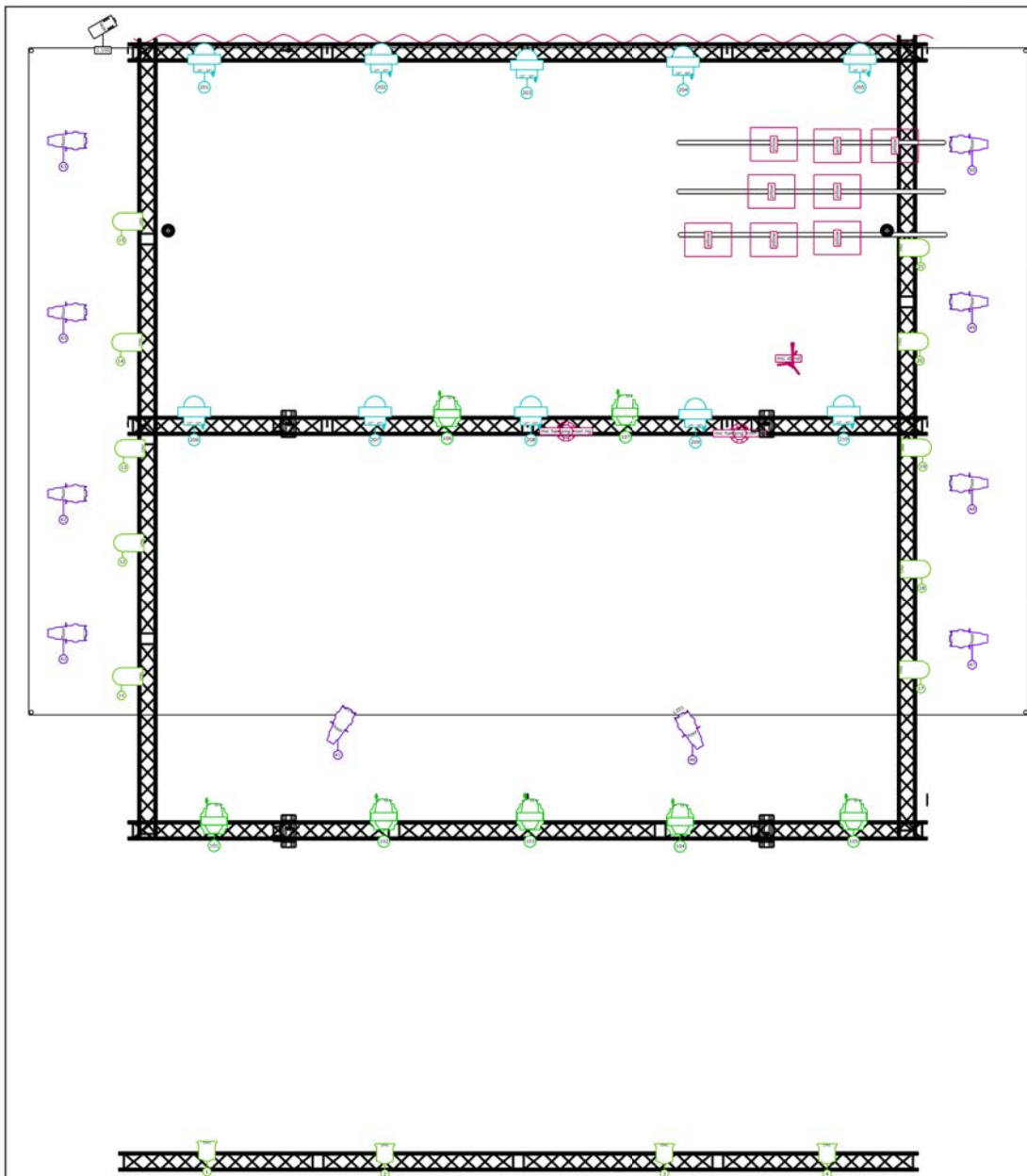
## CATERING

Mineral water, coffee, tea, milk, fresh fruit, chocolate, dried fruit and nuts – all available on setting-up day and performance day(s)

**This show may be adapted to different venues.**

**Don't hesitate to get in touch with our team if any questions arise.**

## GENERAL PLAN (WITH MOVING LIGHTS)



Projekt Name	Anger Management	Standort	Generic	Datum	22.02.2025	Version	Moving Version
Regie	Joshua Monten	<b>Symbol Schlüssel</b>					
Technische Leitung	Mirjam Berger	BT-Orbit (10)	Source Four Zoom 25°-50° (10)	Alpha Profile 700 (7)	Fresnel Juno 2000W (4)	Hazer (1)	
		Par 64 (10)					

## GENERAL PLAN (WITHOUT MOVING LIGHTS)

