



YES/NO

Dance production by Joshua Monten

TECH RIDER (indoor version)

OVERVIEW

"YES / NO" is a 65-minute dance performance.

A full-length performance video is available at <https://vimeo.com/1163685114>

CONTACTS

Choreographer	Joshua Monten	+41 76 323 58 30	joshuamonten@hotmail.com
Lighting Designer	Mirjam Berger	+41 78 648 18 89	mirjam.berger@jostundberger.ch
Technician on tour	TBA		

TEAM ON TOUR

1 choreographer
1 technician
4 dancers

SPACE

The original staging of “YES / NO” was designed for a black-box theater, with tribune seating (risers) on all sides. (See general plan below.)

However, the production is flexible and can be adapted to alternate venues – for instance traditional proscenium stages. Depending on which seating arrangement is used (with or without tribune seating), the audience capacity is between 80 – 300 people.

General requirements:

- Clean white dance floor in an octagonal shape (ideal: 8 m x 8 m; minimum 6.5 m x 6.5 m) for the dancing area (see picture).
- In order to create the octagonal shape, black dance floor is also required.
 - If there is not enough black dance floor to create the entire octagonal shape, we can bring triangular pieces of black dance floor to cover the corners.
- Black curtains on four sides of the stage.
 - Curtains may be omitted if the space has clean black walls.
- Pre-hanging of lights and curtains (if possible).

A more exact set plan will be prepared for each performance location after contact has been made with the venue’s technical manager. Thank you for sending a DXF or DWG file.



LIGHT

See general plans below.

General requirement:

- All lighting devices will be provided with adapted cables, safety and filter frames.
- The lighting desk will be installed in the center of one of the back rows of the audience for the show.
- Space is needed for 2 computers on the desk.
- No glass between stage and operator.

Desk: ETC ION or Element

Dimmers: 12-42 2Kw dimmers on DMX. Same brand, same curve (depends on how many LED fixtures are available)

Filters: According to light plot, depending on the amount of LED lights.

Lamps: According to light plot. Will include:

- 12 PAR 64CP62
- 6 LED front lights
- 10 LED top lights
 - If fewer LED lights are available, they need to be replaced by conventional lights with filters.

A more exact light plot will be prepared for each performance location after contact has been made with the venue's technical manager. Thank you for sending a DXF or DWG file.

SOUND

Provided by the venue:

- We recommend a full-range quadrifrontal speaker system, positioned in all 4 corners, preferably flying
- Mixing board
- Mini-jack cable for laptop

Provided by the company:

- Laptop with QLab and mini-jack port

Channels

- 1 Laptop L at control desk
- 2 Laptop R at control desk

Both sound and light are controlled by the same technician. Thus the sound mixing board should be installed close to the lighting control board.

DRESSING ROOM

We require space for four dancers, heated, equipped with mirrors, showers with hot water, fresh towels, and materials for ironing.

LAUNDRY SERVICES

If show is presented on multiple days, the Presenter must provide laundry service to wash and dry the costumes between each performance day.

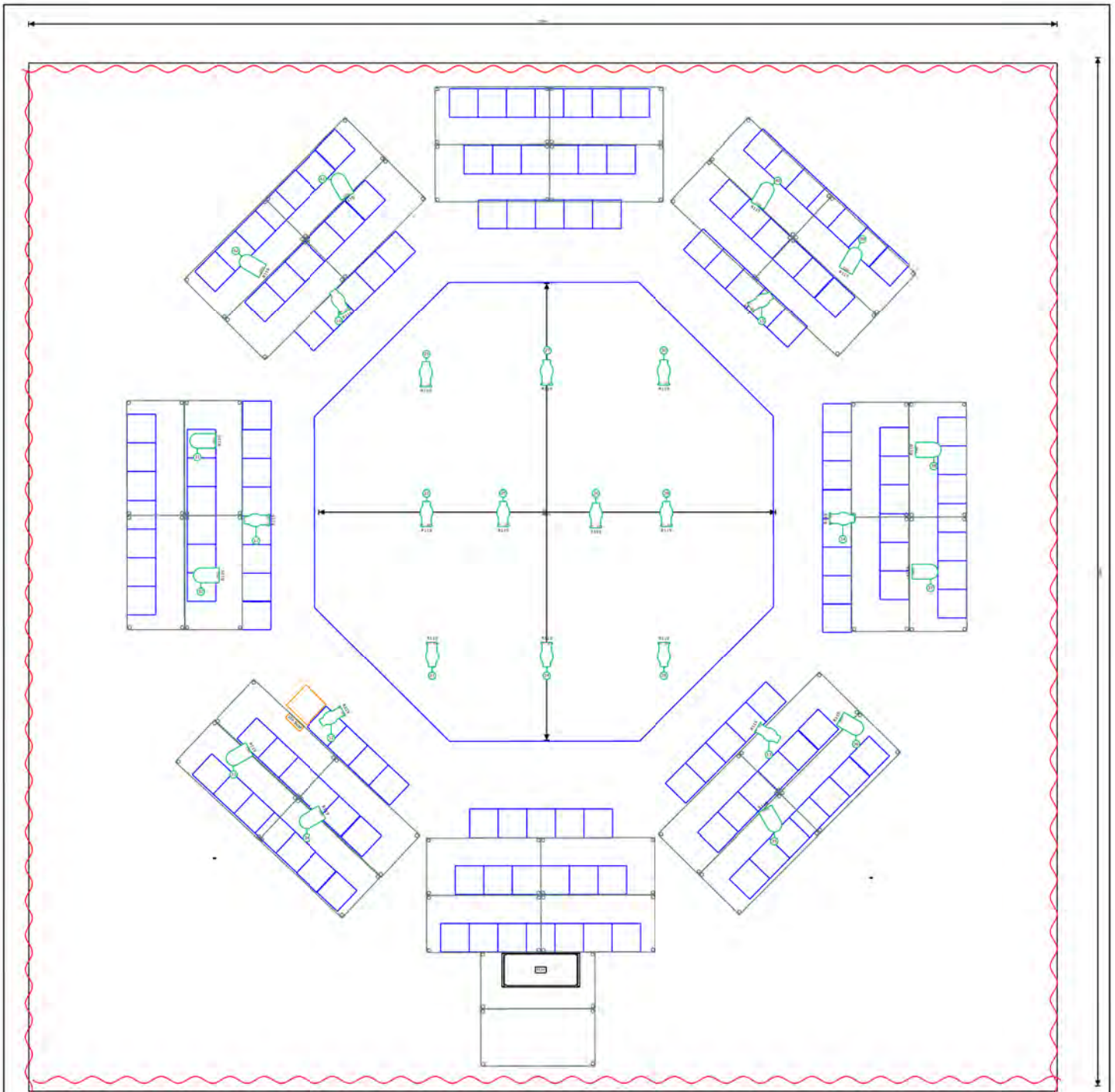
CATERING



Mineral water, coffee, tea, fresh fruit, chocolate, dried fruit and nuts – all available on setting-up day and performance day(s)

This show may be adapted to different venues.

Don't hesitate to get in touch with our team if any questions arise.

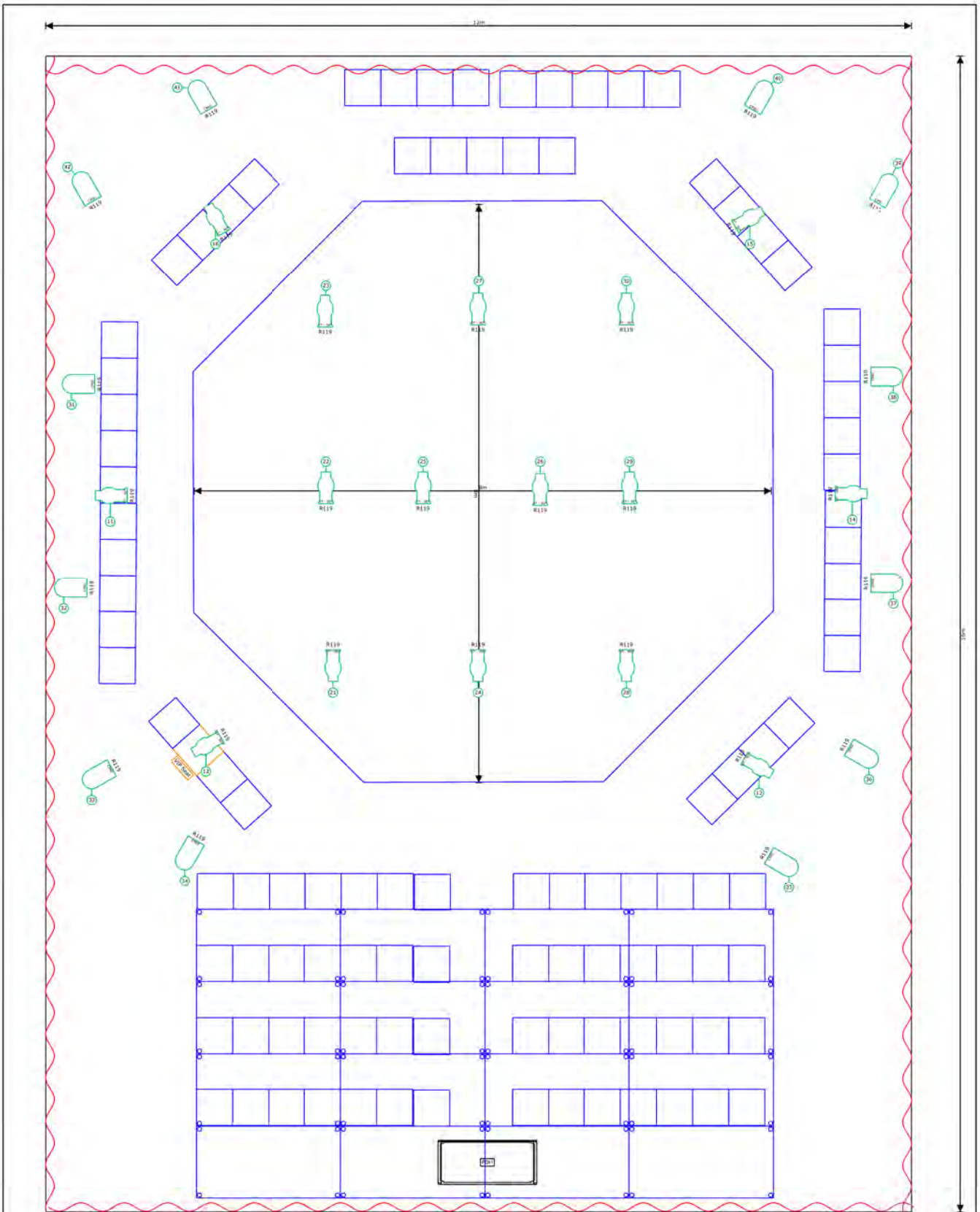
**GENERAL PLAN
(ORIGINAL VERSION, WITH RISERS ON EIGHT SIDES AND MOVING LIGHTS)**



Projekt Name	YES NO generic plot	Datum	01.06.2026	Version	1.1
Regie	Joshua Monte	Symbol Schlüssel			
Technische Leitung	Mirjam Berger		Profile Zoom LED (16)		Par 64 (12)

Stage surrounded by 8 risers. Platforms could be added for more rows.
 0 row: chairs on flat ground in front of the risers
 1 row: platforms 20cm
 2 row: platforms 40cm

GENERAL PLAN (WITH TRIBUNE SEATING ON ONE SIDE AND NO MOVING LIGHTS)



Projekt Name	YES / NO	Standort	Generic	Datum	01.06.2026
Regie	Joshua Monten	Symbol Schlüssel			
Technische Leitung	Mirjam Berger	Profile Zoom LED (16)			
		Par 64 (12)			